



Antenna accessories

SUPPORTS AND BASES

- 1888 KMV-100 Wind set. Steelwire 25m, rigging screw, wirelock, for \varnothing 30-35 mm masts
- 1886 GME-200 Wall support bracket, length 40 mm for \varnothing 45 mm masts
- 1911 GMA-400 Wall-screwing clamp, length 40 cm for \varnothing 45 mm masts
- 1887 BMA-200 Wall bracket with 4-bolt plate and polyethylene cap
- 3071 SPA-240 Wall-fixing "U" type for satellite dishes antennas
- 1067 SCF-085 Ground-fixing "column" type. Height 90 cm x \varnothing 50 mm. Base dimensions 200x200 mm
- 1949 BAP-200 Hooked-support for SCF-085. Base dimensions 200x200 mm
- 1913 BBT-100 Tiltable ridge-tale base for 30-35 mm \varnothing
- 1950 BTA-225 Screwed, triangular fixed base 225 mm
- 1876 BFT-100 Fixed triangular base 225 mm hooked



KMV-100



GME-200



GMA-400



BMA-200



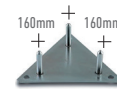
SPA-240



BAP-200



BBT-100



BTA-225



BFT-100

MASTS AND TOWERS

- 1941 MAS-300 Plug-in mast 3m length x 40mm \varnothing . Thickness 2 mm. Zinced steel
- 1880 MAS-250 Plug-in mast 2,5m length x 35mm \varnothing . Thickness 1,5 mm. Zinced steel
- 1942 TOR-250 Trestle-tower or upper section 2,5m. Adapted for ref.1941
- 1944 TOR-150 Trestle-tower or upper section 1,5m. Adapted for ref.1941



SCF-085



MAS-300



TOR-250